

KENTALROOF CONFORT 400 T4 0,55kW (27940480PA)

GENERAL DATA



ROOF FAN WITH HINGED SYSTEM AND ABS COWL

MANUFACTURING FEATURES:

- ABS protection cowl easily removable for access to motor and impeller thanks to the integrated folding system. The ABS cowl is characterized by its toughness, resistance to impacts and is able to withstand extreme ambient temperatures. 100% of the ABS used in the this cowl is recycled.
- The design of the cowl with a **rounded shape** is specific to minimize the risk of water ingress due to rain.
- Equipped with a **hinged system** to open the motor-impeller set. This system allows easy maintenance and cleaning of the set without the need to disassemble the entire structure. The opening is possible in 2 inclinations: approximately 45° and 90°, as required by the intervention.
- Structure in anticorrosive galvanized steel and support frame for adaptation to the roof with anti-bird protection grid.
- High-performance, backward-curved blade (reaction) impellers designed to work without scroll. Self-cleaning system, built in galvanized steel treated with anti-corrosion.
- Standard asynchronous squirrel cage motor with IP-55 protection and Class F insulation. Standard voltages 230V 50Hz for single phase motors, 230/400V 50Hz for three phase motors up to 4kW & 400/690V 50Hz for higher powers and 400V 50Hz for 2 speed motors.

APPLICATIONS

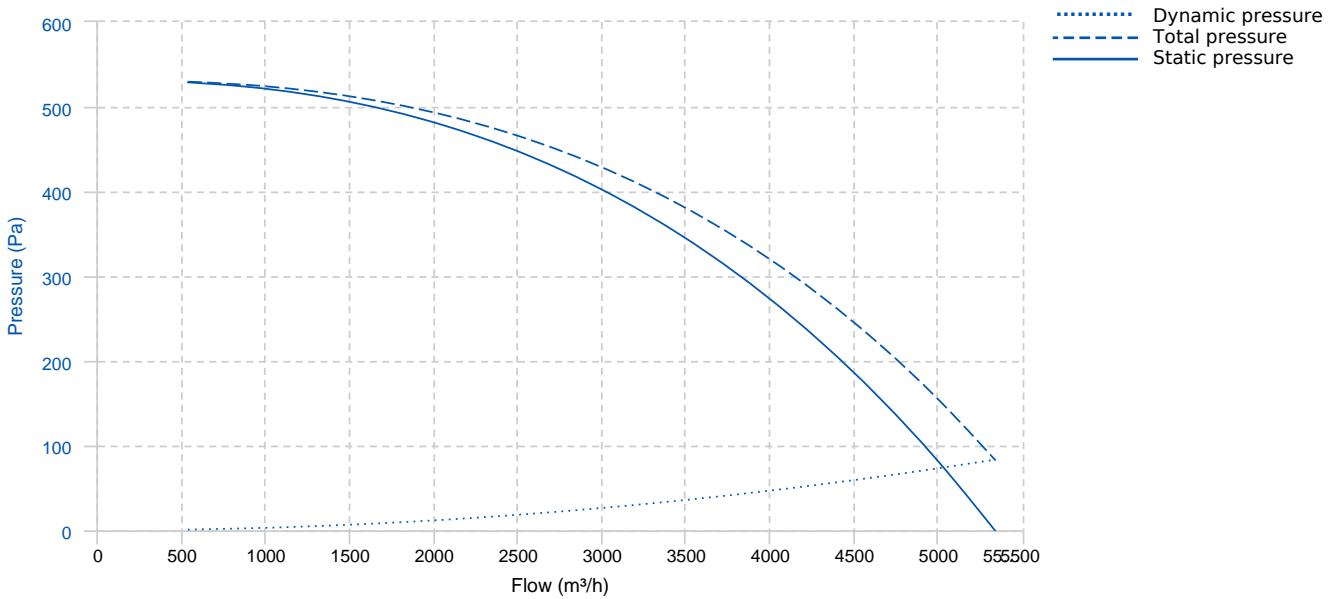
Designed for deck or roof mounting, they are indicated for:

- Smoke extraction.
- Air renewal in all types of buildings and industries.
- Maximum continuous working temperature: transported air 80°C, ambient 60°C to -25°C in three-phase motors.

UNDER REQUEST

- Special voltages.

PERFORMANCE CURVE

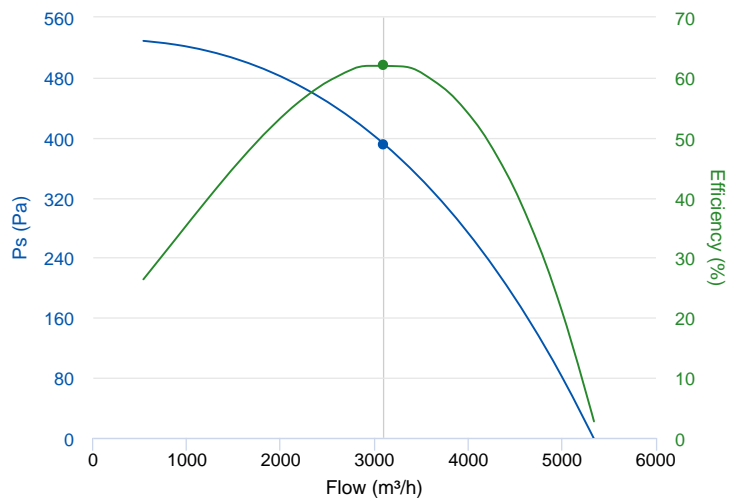


TECHNICAL DATA

Fan							
RPM	1440	Approx. weight	45 kg	Max. Flow	5340 m³/h		
Motor							
Power	0,55 kW	RPM	1440	I max. (230V)	2,57 A	I max. (400V)	1,49 A
Size	80	Approx. weight	9 kg	Efficiency (%)	73.5 %		

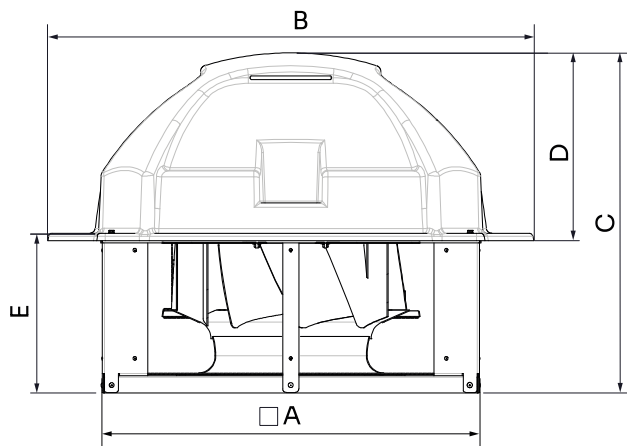
ERP DATA

Fan data sheet		
Fan type	Unit for non-residential ventilation (LOT 6)	
Typology	Unidirectional	
reports.other	None	
Type of driver	None	
Motor power (kW)	0.55	
	Fan values	ERP Requirements 2018
Max. efficiency (%)	62.16	38.49
Effic. Heat recovery (%)	-	
Pabs (kW)	0.568	
Flow (m³/h)	3096.61	
Static pressure (Pa)	391.83	
Speed (m/s)	6.85	



	Fan values	ERP Requirements 2018
SFP (W/m ³ /s)	659.86	

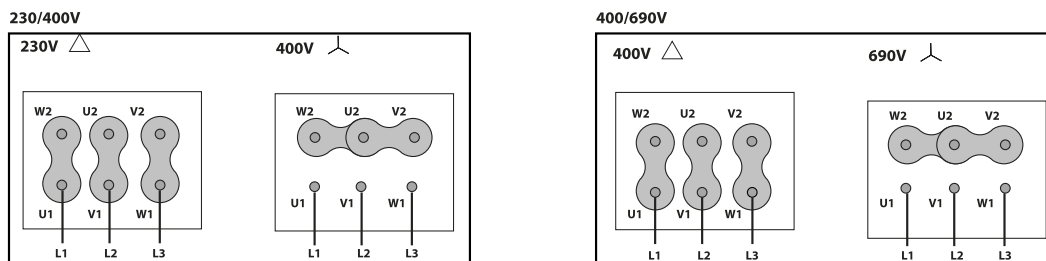
DIMENSIONS



Dimensions (mm)

A (int)	662	B	865.3	C	647.5	D	365	E	295.5
---------	-----	---	-------	---	-------	---	-----	---	-------

WIRING DIAGRAM



ACCESSORIES



SAFETY SWITCH
INT 25 3P A
REF: INT253PA



CONNECTION FLANGE
AC 400
REF: 960003212



**CIRCULAR SILENCER
SIL-C 400/400
REF: 960040040**



**CIRCULAR SILENCER
SIL-C 400/800
REF: 960040080**



**CIRCULAR SILENCER
SIL-CN 400/600
REF: 961040060**



**CIRCULAR-CIRCULAR ANTI-VIBRATION FLANGE
BAD 11 (Ø400)
REF: 960003461**



**CIRCULAR SILENCER
SIL-C 400/600
REF: 960040060**



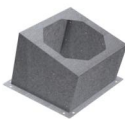
**CIRCULAR SILENCER
SIL-CN 400/400
REF: 961040040**



**CIRCULAR SILENCER
SIL-CN 400/800
REF: 961040080**



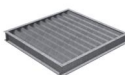
**FREQUENCY SPEED CONTROLLER
SFC 230 I 4,2A *
REF: SFC230I004**



**INCLINED ROOF FAN SUPPORT
BTI 640
REF: A-50870640XX**



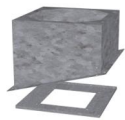
**FREQUENCY SPEED CONTROLLER
SFC 400 III 2,2A *
REF: SFC400III2**



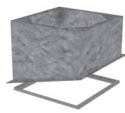
**DEPRESSION DAMPER (HORIZONTAL or
VERTICAL PLACEMENT)
CMP-HUT 500x510
REF: CMPHUT5051**



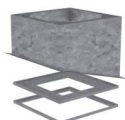
**KENTALROOF VERTICAL DISCHARGE
KV KENTALROOF 400
REF: KVKNTR400**



**BTI + ACMP MOUNTED
BTI+ACMP 640
REF: BTIACMP640XX**

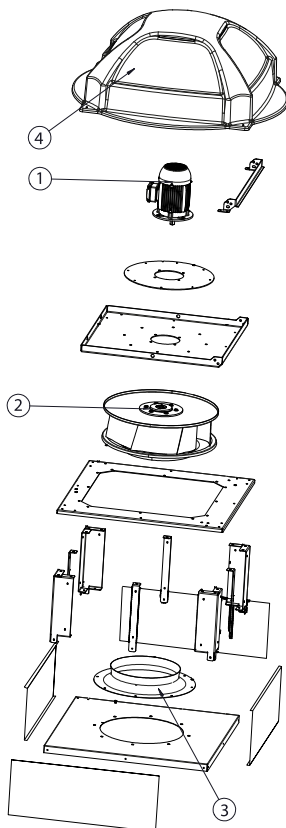


**BTI + AMC MOUNTED
BTI+AMC 640
REF: BTIAMC640XX**



**BTI + ACMP+AMC MOUNTED
BTI+ACMP+AMC 640
REF: BTIACMPAMC640XX**

SPARE PARTS



	Code	Model	Qty
1	721001139	MOTOR 0,55kW T4 B5 230/400V	x1
2	R-R63D1L400-19	IMPELLER R63D1L400x112x19 LG	x1
3	R-BAD400PK1	INLET CONE ED11P 400	x1
4	R-279404478	ROOF COWL KENTALROOF 355-450	x1